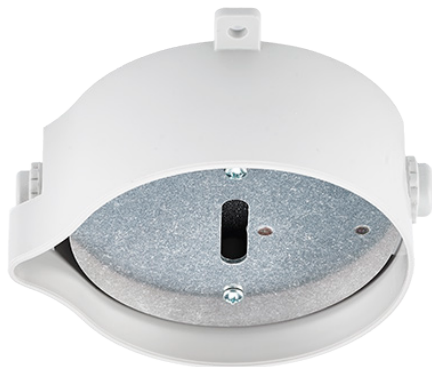


6228

Detector heater



Features

- › Prevention of condensation
- › For detectors in cold or humid environments
- › Self regulating with a surface temperature of 40 (± 7) °C
- › Increases the ambient temperature of -20 °C to -10°C for the mounted detector
- › Allowing it to work within the specified environmental conditions
- › Fast connectors for power supply cables

General

- › CE

Order number

- › 6228 - Detector heater

Related products

- › 2324 - Base
- › 3312 - Analog base
- › 3312F - Analog base
- › 3312FL - Analog base
- › 4313 - Analog base with isolator
- › 4412F - Analog base

Base + detector must not have a total height that exceeds 64,3 mm.



142 g



Ø108 x 45 mm



12-30 V AC/DC



-20 TO +55 °C



<95%

